



PIONEERING THE FUTURE

100 Years of Proficiency in Lab Solutions





About Us

Laboratories serve as cradles of innovation, where ground-breaking scientific discoveries are nurtured. At GD Waldner, we craft bespoke, future-ready and eco-friendly laboratory spaces perfectly aligned with your specific requirements.

Our cutting-edge solutions provide a secure, accurate, energy conscious, and technologically advanced environment, empowering you to concentrate on your core mission - shaping a brighter tomorrow.

With a legacy of a hundred years in serving the scientific community, GD Waldner stands as the cornerstone of comprehensive laboratory solutions, driving the entire journey from concept to breakthrough. This legacy is also testament to our transparent business practices, long-standing partnerships and customer-centricity.



Why Us



100 years of excellence in designing and building world-class lab spaces



World-class products and solutions – designed in Germany, manufactured and executed in India



Comprehensive design-build solutions including MEP services (HVAC, Gas Piping, Electrical, Interiors, and BMS)



Unmatched service and faster project turnaround time in India



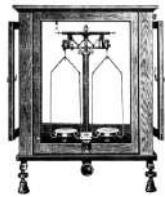
International project experience to offer the best design elements from around the world



Highly responsive service network – experienced technicians equipped with the original spare parts

Our 100 Year Journey

As we celebrate a century of scientific proficiency, we remain committed to pushing the boundaries of knowledge further to achieve key milestones. Our rich tradition of innovation has left an indelible mark across diverse fields, actively shaping the landscape of scientific discovery.



The business was founded as Gordhandas Desai and was set to import scientific instruments to fulfill the growing needs of Universities and Colleges of India.

1924-1955

1956

Gordhandas Desai Pvt. Ltd. (GDPL) was registered as a private limited company and expanded its operations.



**GORDHANDAS
DESAI
PVT. LTD.**



C. Z. Instruments India Pvt. Ltd., an associate of GDPL, became the exclusive distributor in India for Carl Zeiss Jena, Germany in 1969.

1969-1990

1979

GDPL established, for the first time in India, a steel-based laboratory furniture and fume hoods manufacturing facility in Vadodara.



As the pioneering supplier of factory-made steel modular laboratory furniture in the country, GDPL soon consolidated its presence in the market.

1994

At the heart of our ethos is the belief in forging enduring partnerships that span the entire life cycle of the laboratory.

2012

GDPL partnered with a global fume hood and laboratory infrastructure expert, Chip Albright from USA, to enhance its product offerings and position the company on a global scale.



GD LAB SOLUTIONS

Gordhandas Desai initiated a major shift by changing its name to GD Lab Solutions Pvt. Ltd. (GDLS).

GDLS also earned SEFA 8M, SEFA 1, and SEFA 10 certifications, a first for an Indian company.

2013

2016-2020

As the OEM supplier for Waldner, Germany, GDLS exported laboratory furniture to Waldner subsidiaries in Europe, the Middle East, Singapore, China, and Ireland.



GD Waldner

GD Waldner India Pvt. Ltd. (GDW) was born as a joint venture between Waldner, Germany, and GDLS, following an equity investment from Waldner into the company.

2021

2024

GD Waldner India Pvt. Ltd. celebrates a century of delivering top-tier laboratory solutions to the world.





Industries Served

GD Waldner is a one-stop turnkey solutions provider for all applications across scientific research and discovery.

We offer comprehensive design-build solutions, including facility design, HVAC, Gas piping, Electrical, Interiors, and BMS. Our integrated services prioritise adaptability, safety, and energy efficiency, which ensures a holistic approach to meet your evolving needs efficiently.

Bespoke Solutions for every Industry need

Diverse industry sectors come across different challenges and have varied research and testing needs. Laboratories play a crucial role in addressing and providing optimal solutions to these complex challenges.

GD Waldner excels in delivering bespoke solutions to laboratories across diverse sectors, such as pharmaceuticals, chemicals, testing and research, education, food & beverage, electric mobility, and biotechnology & life sciences. Our team, comprising professionals with extensive industry experience, is adept at providing tailored solutions faced by these sectors.



Pharmaceutical

In the world of pharmaceutical R&D, where life-saving drugs are born, we step in to make a tangible impact by providing scientists with advanced, energy-efficient labs that adhere to global standards, ensuring a safer and more efficient environment.





Chemicals

The labs we build are used to create life-enhancing products like new-age plastics, agrochemicals, adhesives, and coatings. Our advanced fume hoods prioritise safety, enabling breakthrough discoveries. Our labs minimise health and safety risks in chemical handling, cutting operating expenses, and energy costs to support your sustainability goals.





Biotechnology & Life Sciences

Our solutions span a range of applications including BSL labs, microbiology labs, animal houses, vaccine and oncology facilities. They are designed to provide a secure environment for managing infectious agents, testing drugs, developing vaccines, or facilitating breakthroughs in genetic research.





Electric Mobility

We align with your vision for a sustainable world and a more energy-efficient future. Our tailored lab spaces specialise in electric mobility, enhancing crucial areas such as battery research and cell testing to support your goals.





Education

We are fostering science and innovation in the long term by providing our society's brightest minds with prime facilities. Our laboratory solutions provide a safe and secure environment for experiential learning, experimentation, and innovation.





Food and Beverage

From crafting chocolates to plant-based meat alternatives, our labs serve as a hub for innovation where every product is evaluated, developed, and refined. With adaptable spaces and user-focused designs, it facilitates new product development, while stringent quality assurance and control measures ensure the highest levels of excellence.





Testing And Research

Our practical, future-ready solutions are adaptable to evolving lab needs. With extensive experience in certification, testing, inspection, analysis, lean lab management, and workflow, we help you achieve faster, better results. Our flexible solutions reflect our commitment to advance human knowledge through research.



Turnkey Laboratory Solutions

Comprehensive Solutions for Continued Innovations

Our end-to-end design-build solutions help you create dynamic, future-ready lab spaces. We have in-house domain knowledge and extensive design expertise for a wide range of laboratory and research applications. Our solutions address the entire spectrum of Mechanical, Electric, and Plumbing (MEP) needs of laboratories. This includes:

HVAC



State-of-the-art HVAC systems with a proven track record of safeguarding lab users from the most hazardous fumes, vapours, and radioactive materials.

Electrical Systems



Integrating world-class engineering, industry insights, and local climate factors to deliver sustainable, user-friendly electrical systems for internal and external use.

Firefighting Systems



Comprehensive firefighting systems that ensure the highest standard of user and lab safety.

Gas Distribution Systems



Gas distribution systems that seamlessly integrate into the laboratory environment.

Build Process

With expertise spanning design, project management, and final execution, we offer comprehensive turnkey lab solutions. As a one-stop provider, we ensure a meticulously harmonised, refined, and interconnected laboratory ecosystem. Our solutions prioritise adaptability, safety, and energy efficiency, seamlessly evolving with clients' changing needs while minimising ownership costs.



Brief from Client



Project Planning



Site Visit
for additional
information



**Extra Low Voltage
Systems (ELV)**



Intelligent ELV systems safeguard laboratories with seamless integration into emergency and building management systems.

**Integrated Building
Management Systems**



Design and commission of complete intelligent lab systems, controllers, and field devices that harmonise well with the overall building management system.

Public Health Engineering



Tailored PHE solutions, leveraging our substantial project management experience to ensure that our partners meet all PHE standards and codes.

Interiors



Smart interior designs for labs that are visually compelling and optimised for functionality and utility.



**Design
Development**



**Project
Coordination**



**Material
Procurement**



Construction



**Testing &
Inspection**



**Project
Commissioning**



**Handover
to Client**

Design Services

Professional Lab Planning and Detailed Engineering For High-performance Lab Spaces

At GDW, we take great pride in the expertise of our in-house engineers. Our team specialises in designing process-driven, labs that incorporate the latest trends of the market while complying with all relevant standards.

Our Expertise:



Competent Engineers:

Our team comprises highly skilled and experienced engineers who are dedicated to delivering excellence in lab design.



Process-Driven Approach:

We understand the importance of efficient processes. Our labs are meticulously designed to optimise workflow and productivity.



Latest Trends:

We stay up-to-date with the latest trends in lab design and technology to ensure that our clients have access to cutting-edge solutions.



Compliance:

We prioritise compliance with all relevant standards and regulations to guarantee the safety and quality of our lab designs.

Why Choose Us:

■ Custom Solutions:

We work closely with our clients to understand their unique requirements and tailor our designs accordingly.

■ Quality Assurance:

Our commitment to quality ensures that every aspect of our lab design meets the highest standards.

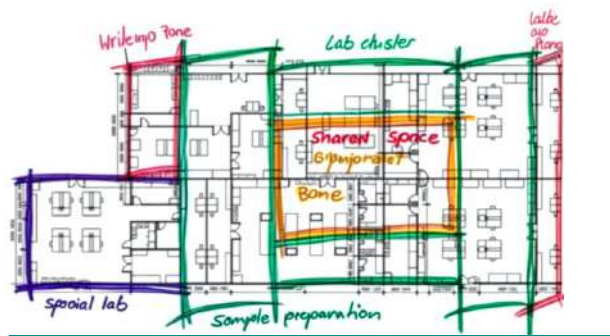
■ Innovation:

We thrive on innovation and are constantly exploring new ideas and technologies to enhance our offerings.

■ Client Satisfaction:

Our ultimate goal is the satisfaction of our clients. We strive to exceed expectations and deliver results that meet their aspirations.

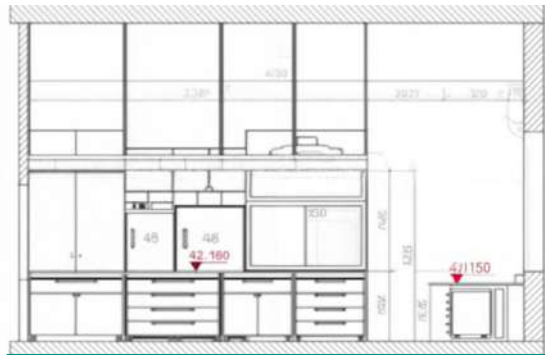
In addition to laboratory furniture, fume hoods and MEP Services, we also offer design consultations where we leverage our technical knowhow to provide customised design-only solutions.



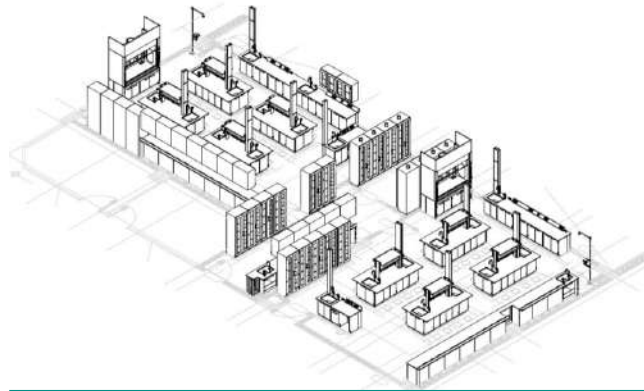
Conceptual Design



Basic Design



Detailed Engineering



BIM / 3D



Interface Design



Renderings / Videos



Laboratory Furniture

Cutting-edge Solutions for Modern Research Spaces

Our furniture casework solutions are designed to be maintenance-free and are built to last the life of the lab. They are highly adaptable, flexible, open, communicative, and durable, thereby meeting the demands of modern laboratories.

Our passion lies in creating laboratories that not only meet your immediate needs but also embrace the ever-evolving advancements in scientific exploration. With a relentless focus on durability and unmatched quality, we strive to empower scientists, researchers, and innovators with the perfect environment to unlock the secrets of tomorrow.

Our SEFA 8M, SEFA 10 and EN 14727 compliant furniture systems include lab tables, cabinets, benches, sinks, sliding elements, tall cabinets, service modules, and chemical storage cabinets.



- Up to 900 kg load-bearing capacity of our floor-standing cabinets, ensuring they can withstand heavy loads
- 500 kg per square foot load-bearing capacity of our tables that can support significant weight
- Furniture built with the highest material thickness for durability and robustness
- High-quality surface finish with a powder coating thickness of 60 to 70 microns
- **Durability** fully welded, full frame steel construction, steel base cabinets are certified SEFA compliant
- **Flexibility** completely modular and customisable solutions for any lab applications
- **Lab Grade** 5-Knuckle institutional type stainless steel hinges. An array of hardware options, such as soft-closing drawers provide smooth and silent closing action for enhanced functionality and safety
- **Wider Choice** Plinth/Floor Mounted, C-Frame Suspended/Movable Cabinets



Fume Hoods & Controllers

Smarter Solutions for Future-ready Laboratories

We understand that fume hoods are critical and the primary safety devices present in labs to protect scientists and researchers from exposure to toxic and potentially fatal chemical vapours. Our best-in-class fume hoods blend cutting-edge safety features with intelligent control systems to create laboratories that are not only well-equipped to manage today's challenges but are also future-ready.

Fume Hoods

Empowered by Secuflow technology, our fume hoods not only excel in achieving exceptional containment values but also provide steadfast protection for your workforce. Boasting a proven performance record that surpasses DIN EN 14175 and ASHRAE 110 requirements, our fume hoods consistently deliver unmatched reliability.

In addition to being smooth and maintenance-free, our ergonomically designed fume hoods also generate 33% less exhaust volumes compared to conventional systems, thereby adding to the safety and sustainability of laboratories.



Fume Hood Controllers

Unlike conventional systems, our smart controllers intelligently manage airflow in fume hoods. They use volumetric flow, not face velocity. These controllers integrate with IoT room controllers and Building Management Systems via Modbus or BACnet. They offer features like 0-point adjustment, measuring line flushes, wake-up, emergency stop, and night setback mode.

With our VAV controllers, you can achieve up to 50% savings in operating expenses compared to conventional systems.

These German-made controllers ensure high measuring accuracy ($\pm 5\%$) and rapid response (<1 sec.) for top-notch user safety and lab energy saving.

Safety



Containment



Sash Belt



Lower Airfoil



Baffle Design



Low Energy Consumption



Fume Hoods Dimension Options

| | | | | | |
|--|------|------|------|------|------|
| Grid Length (mm) | 1200 | 1500 | 1800 | 2100 | 2400 |
| Safe sash opening area (SFt) | 5.1 | 6.7 | 8.3 | 9.9 | 11.6 |
| Exhaust Volume (CFM) @ 60 FPM | 306 | 402 | 498 | 594 | 696 |
| Exhaust Volume (CFM) @ 80 FPM | 408 | 536 | 664 | 792 | 928 |
| Exhaust Volume (CFM) @ 100 FPM | 510 | 670 | 830 | 990 | 1160 |
| Dimensions | 1200 | 1500 | 1800 | 2100 | 2400 |
| Width (mm) | 1200 | 1500 | 1800 | 2100 | 2400 |
| Depth (mm) | 900 | 900 | 900 | 900 | 900 |
| Height (including under bench unit) (mm) | 2400 | 2400 | 2400 | 2400 | 2400 |
| Clear internal width of internal workspace (mm) | 940 | 1240 | 1540 | 1840 | 2140 |
| Clear internal height of internal workspace (mm) | 1345 | 1345 | 1345 | 1345 | 1345 |
| Working height (mm) | 900 | 900 | 900 | 900 | 900 |
| Worktop load (kg) | 200 | 200 | 200 | 200 | 200 |

LAB 4.0

Taking Laboratories into the Digital Age

Industry 4.0 is on the way to revolutionise the way companies manufacture, improve and distribute their products. The labs where these innovations are born and assessed must be a step ahead.

This is where IoT solutions by GD Waldner come in as a transformative solution for your lab. By seamlessly connecting instruments, devices, and systems through a network of sensors, actuators, and data communication protocols, IoT brings a new dimension

of intelligence and automation to laboratories.

Imagine a laboratory where equipment maintenance is predictive rather than reactive, energy consumption is optimised in real-time, environmental conditions are meticulously monitored to ensure the integrity of experiments, fume hoods are dynamically adjusted based on real-time air quality data, and the HVAC energy consumption is meticulously tracked and optimised without compromising safety.

GD Waldner heralds a new era of laboratory management, where safety is driven by intelligence, operations are finely tuned, and sustainability is built into the design.



Services

Service-backed Innovations for Complete Peace of Mind

Our commitment to engineering excellence has stood the test of time. For the past hundred years, our passion for innovation and precision has pushed the boundaries of scientific possibilities. At GD Waldner, we strive to constantly innovate and improve to deliver the highest degree of safety and energy efficiency in everything we make. For example, our unique labelling system enhances the safety of fume hoods. Each unit is assigned a unique Hood Identification Number (HIN), allowing for meticulous cataloguing of critical information.

Technical Support & Warranty Management



Our comprehensive lab assurance ensures compliance and optimal performance. Beyond warranty, we offer AMC agreements, technical support, and 24/7 service support. AMC programs cover preventive maintenance, calibrations, and validations. We also service fume hoods and furniture systems from other manufacturers.

Tri-Color Airflow Visualiser



Our cutting-edge tool Tri-Color Airflow Visualiser helps users visualise the airflow inside a fume hood through three different colours. The blue shows a cross-section of the vortex, the red shows what is happening on the backside of the sash and the green shows the loss of containment.

Training & Qualification Seminars



Our immersive training workshops help lab users and maintenance teams get first-hand experience on how to interact with the lab equipment and maintain them. The fume hood training workshops, for example, offer a step-by-step guide covering safe working practices, equipment placements, blower operation practices, etc.

While our solutions are born through innovation and ingenuity, they are backed by customisation options for specific applications and robust after-sales support. From concept to de-commissioning, we provide service support throughout the entire laboratory life cycle.

By feeding the HIN into our Fume Hood Performance Tracker software, customers gain access to comprehensive details about their units, fostering a digital trail that minimises liability in case of accidents. This versatile system is especially beneficial for managing fume hoods distributed across multiple buildings and floors.

Repairs, Spare Parts & Accessories



Our service personnel ensure the safety and non-recurring maintenance of lab equipment by using the best quality original spare parts. We ensure professional implementation and optimum maintenance with tailor-made framework contracts for repairs, including repairs for external brands.

Relocation, Retrofitting & Modernisation



We will take care of disassembling & reassembling lab furniture and fume hoods as well as modernising and retrofitting of monitoring and controlling components.

Sustainability

Lab Solutions Customised to your Sustainability Commitments

At GDW, we deliver efficient, cutting-edge lab designs that not only optimise workflow and productivity but also contribute to a greener, more sustainable future. Through our team of in-house engineers, we design process-driven labs that prioritise workplace safety, resource utilisation and ease of operations, while meeting the latest market trends and compliance standards.

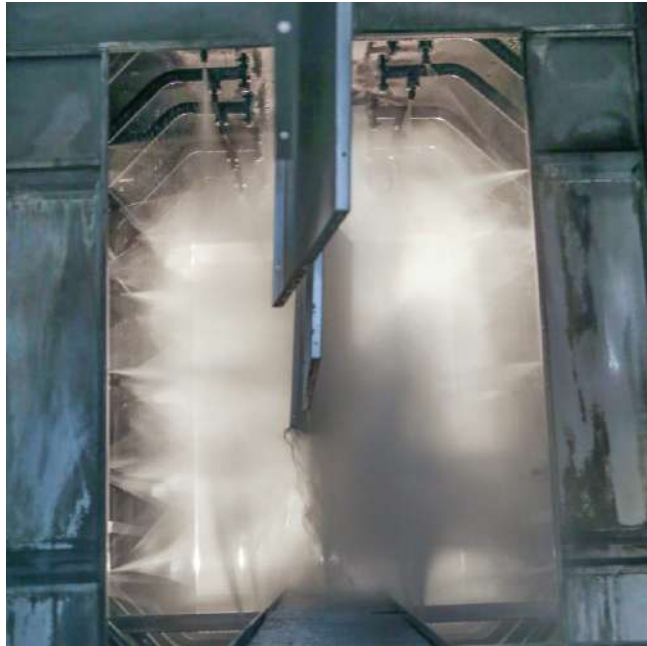
With a commitment to quality and innovation, we also work closely with our clients to understand their unique requirements and ESG goals, and tailor our designs accordingly. Thereby, empowering our clients to achieve their sustainability goals.



GDW's electrical supply consists of 100% green electricity. Our solar powered photovoltaic system of 345 KWp generates over 483,000 units annually.

State-of-the-Art Pre-treatment & Powder Coating Plant for Lab Grade Finish

Flawless SEFA Compliant Finish | Superior Corrosion Resistance | Long Life and Durability | Aesthetic Appearance



Pre-treatment Process



Automatic Powder Coating



Automatic Conveyorised Pre-treatment & Baking



Manufacturing Facility



Vadodara, India
+91 99740 21700/650

Hyderabad, India
+91 73045 33027

Mumbai, India
+91 88003 93804

Bengaluru, India
+91 96866 75332

Delhi, India
+91 88003 93801

WALDNER Group, Germany
+49 7522 986-0

Customer Service & Support
service@gdwaldner.com
+91 99740 21696

www.gdwaldner.com

*This literature provides only representative information of the company's range of products. More details are available on request.
Progressive improvements made on company's products forbid illustrations & text to be binding on us as to details of latest design.*